

# DL Smart loader-crane

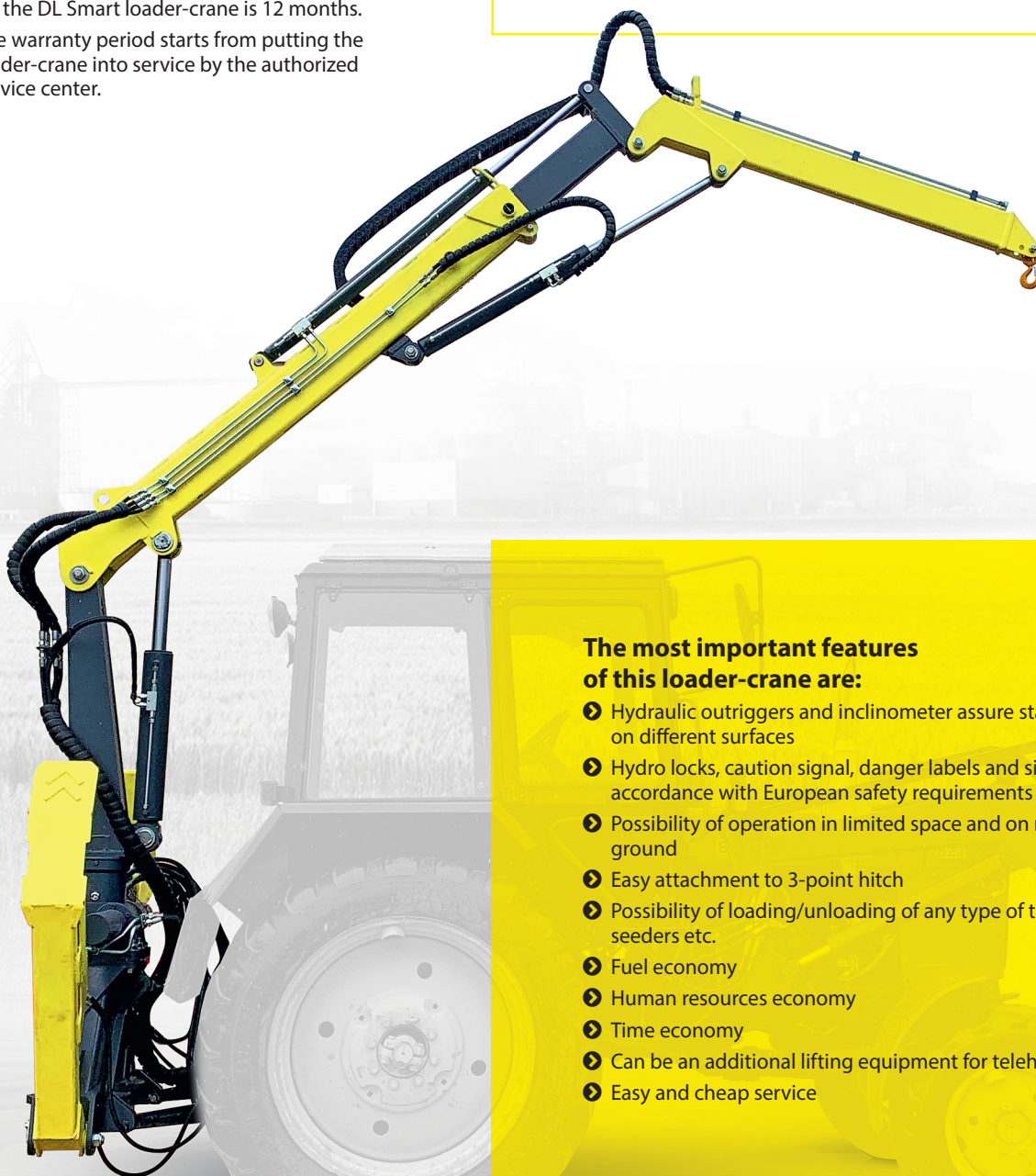
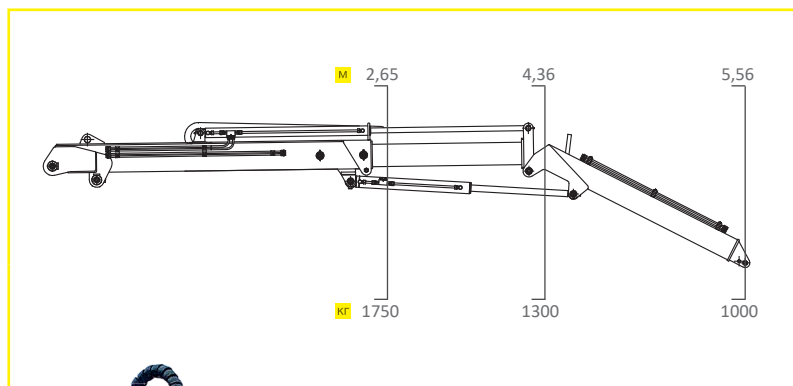
## **DL Smart loader-crane (1t/5.5m) is the attachment for tractors for 3-point linkage.**

DL Smart is designed for operation in farming for Big-Bags loading and unloading at field and for warehouse activities, housing and communal services and forestry as well as for construction and repair. DL Smart loader-crane increases efficiency of any tractor and trailer used for the needed activity.

### **Warranty period**

for the DL Smart loader-crane is 12 months.

The warranty period starts from putting the loader-crane into service by the authorized service center.



### **The most important features of this loader-crane are:**

- Hydraulic outriggers and inclinometer assure stability on different surfaces
- Hydro locks, caution signal, danger labels and signs in accordance with European safety requirements
- Possibility of operation in limited space and on rough ground
- Easy attachment to 3-point hitch
- Possibility of loading/unloading of any type of trailers, seeders etc.
- Fuel economy
- Human resources economy
- Time economy
- Can be an additional lifting equipment for telehandlers
- Easy and cheap service



# DL Smart loader-crane

## Technical specifications

Max. horizontal reach, m	5,56
Max. reach lifting capacity, kg	1000
Min. reach lifting capacity, kg	1750
Max. vertical reach, m	8,4
Slewing angle, degrees	370
Crane weight without working liquids, kg	1100
Linkage system category 2, 3; type	3 points/flange
Outrigger (type)	hydraulic
Max. oil flow, L/min	40-60
Max. working pressure, bar	180
Control valve (8 sections)	+
Caution signal at operator post (type)	button
Circular level (type)	bubble
Dimensions in transport conditions (H x W x L), mm	3130 x 1900 x 1580
Pick-up mechanism	Hook/grapple



Grapple for hay  
DL-S14.U



Grapple for bulk materials  
DL-70.44.U



Grapple for wood  
DL-C4.U



[www.dlwest.eu](http://www.dlwest.eu)



[web@dlwest.eu](mailto:web@dlwest.eu)



+48 22 266 26 24